

THIS
MAGAZINE
PAYS FOR
ITSELF!

HUNDREDS OF WAYS TO SAVE TIME & MONEY

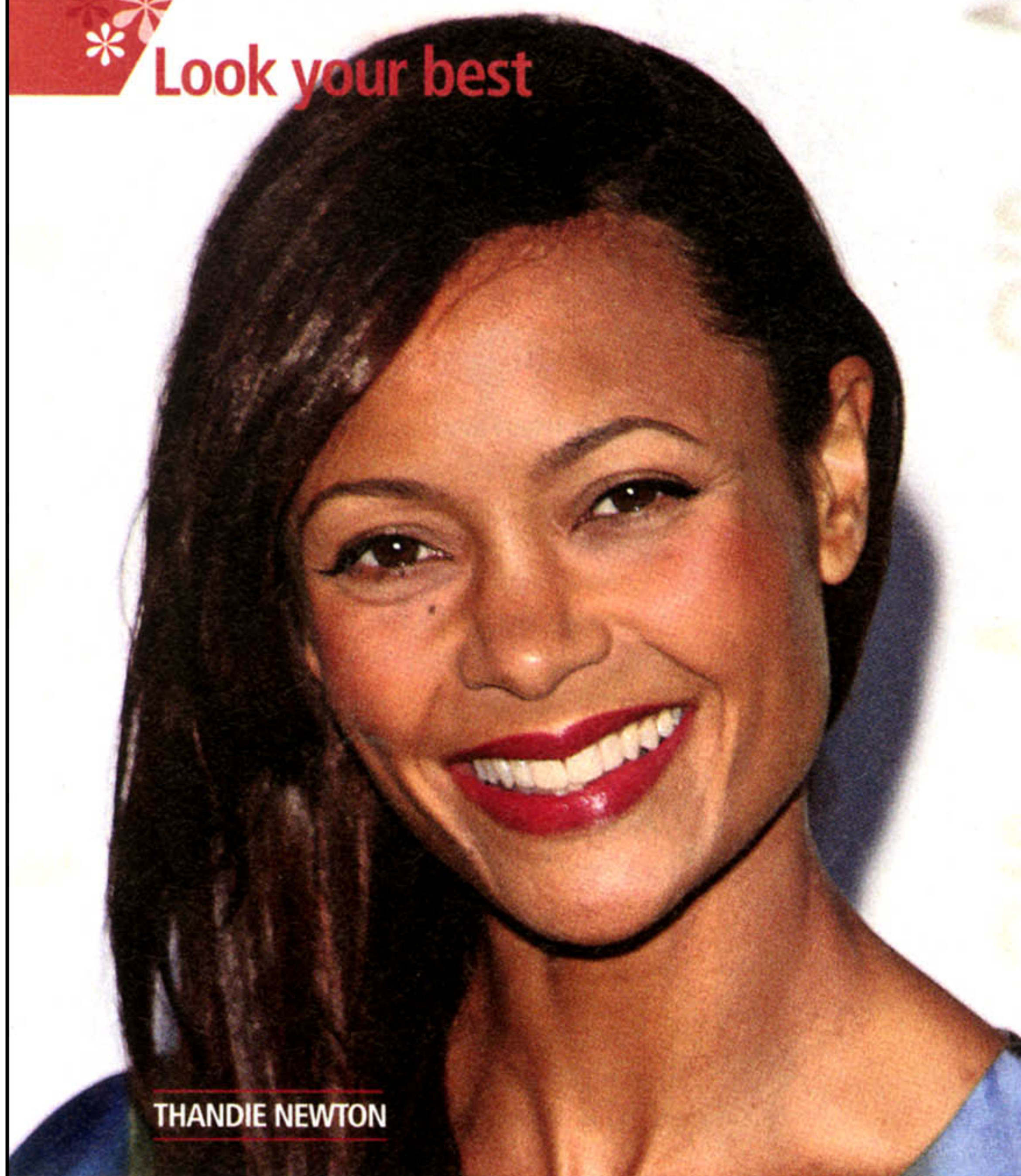
allyou

* ENJOY LIFE FOR LESS

Issue 12, December 18, 2009

INSIDE
\$64.80
WORTH OF
COUPONS

Look your best



THANDIE NEWTON



Just a hint

Berry lips

Create a romantic, feminine look using rich purplish tones.

1 Heal chapped lips. Remove flaky skin with a damp washcloth, and coat your mouth with a waxy balm. Let it soak in, then remove any excess. (Otherwise, color will slide off easily.)

2 Prevent feathering. Line and fill in lips with a nude pencil before applying color. This will help the shade last longer and define the shape of your pout, too.

3 Layer color in two thin coats, blotting after each. If you have thin lips, opt for light to medium violets; darker tones have a minimizing effect.

* This ladylike raspberry stain gives lips a juicy flush without the heaviness of lipstick.

CoverGirl Outlast Lipstain in Berry Smooch, \$8; at mass retailers.

* For a bold, precise deep-plum mouth, choose pigment-rich products; they also stay in place longer.

Flirt Chick Stick lip color in Cheer, \$10; at Kohl's.



Full-on glam

Shimmery eyes

Draw the focus to your lids with sparkly shadows in striking hues.

1 Play up your peepers in shades that contrast with your eye color. Combinations to try: bronze with blue eyes, violet with brown and taupe with green.

2 Create depth. Apply a medium-tone shadow on lids first, then layer a deeper shade along top and bottom lash lines and in the outer corners of creases. Blend well. The result should look like a soft ring of color around each eye.

3 Add a finishing touch. Trace lids with dark brown or black liner, and define lashes with two coats of deep black mascara.

Just a hint



* Creams appear more natural than powders since they sink into your skin instead of sitting on top.

Revlon Illuminance Creme shadow in Precious Metals, \$7; at mass retailers.

* To intensify the color, dampen your makeup brush before dipping it into the powder.

NP Set Eye palette in Dublin, \$20; at Target.

Full-on glam



RACHEL WEISZ

Dress up your nails

Paint on the season's hottest shades: vivid violets and sexy metallics.



China Glaze in Seduce Me, \$6; sallybeauty.com.



CND in Plumville, \$9; at Ulta.



Milani in Blackberry Baby, \$3; at mass retailers.



SpaRitual in Gold Digger, \$10; skinstore.com.



Zoya in Trixie, \$7; zoya.com.